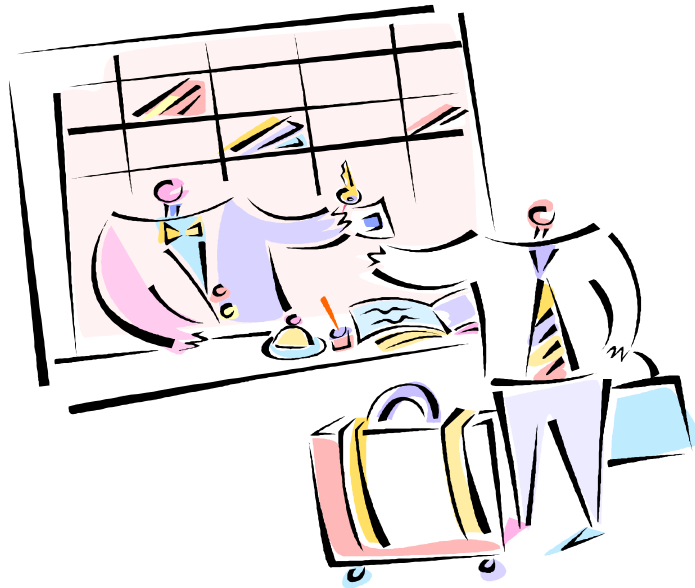

PATIENT ACCOMMODATIONS GUIDE



Department of Social Work Services

**Tufts Medical Center
800 Washington Street
Boston, MA 02111**

www.tuftsmedicalcenter.org

Updated April 2010

Disclaimer: Information compiled by the Department of Social Work Services, Tufts Medical Center. Tufts Medical Center does not endorse any of these organizations or accommodations. We encourage you to direct specific questions to the agencies listed as information/rates are subject to change without notice.

HOTEL ACCOMMODATIONS 2010 IN BOSTON

VALUABLE TIPS

Always ask for the "**TUFTS MEDICAL CENTER RATE**" when making hotel reservations for patients and/or their family members. This will ensure that the patient or family member receives the **lowest rate** possible. To guarantee this rate and to receive immediate confirmation, call the local telephone number of the hotel.

Web-site addresses have been included in this listing to give access to more detailed information on individual hotels including directions, amenities, etc. Be careful to note any cancellation policies, restrictions or fees, which may apply. If you have problems booking through the internet, please call the hotel.

All Boston hotels are subject to Massachusetts tax @ 14.45%. Please note the hotel rates listed in this guide are pre-tax rates.

Parking at Tufts Medical Center is less expensive than at downtown hotels and is available at the Tremont Street Garage, 274 Tremont Street, next to the Wang Center, or the Washington Street entrance, both with direct indoor access to the Floating Hospital, outpatient care areas and inpatient floors. The Tremont Street Garage (617-636-5580) is open 24 hours/day. Valet parking is available on Nassau Street, adjacent to the South Building at 860 Washington Street. "Valet Service" (617-636-8970) is free, open from 6:00 am to 4:00 pm, Monday - Friday, and the parking rates are the same as those for the Tremont Garage.

Patients should have their parking tickets validated for reduced parking rates.

MORE VALUABLE TIPS

During certain times of year (conventions, holidays, etc.) when most hotels in Boston are full, you may find the following resources helpful:

CENTRAL RESERVATION SERVICE of NEW ENGLAND

Daily 9:00am – 11:00pm
No-fee discount hotel reservation service

1-800-332-3026 or 617-569-3800
www.bostonhotels.net

GREATER BOSTON CONVENTION AND VISITORS BUREAU

Information booths Boston Common & Prudential Center
Monday – Friday (9:00am – 5:00pm) (9:00am – 5:30pm)

1-888-SEE-BOSTON
www.bostonusa.com

MASSACHUSETTS OFFICE OF TRAVEL AND TOURISM

Monday-Friday from 9:00am – 5:00pm

1-800-227-MASS or 617-973-8500
www.massvacation.com

ACCESS TO TUFTS MEDICAL CENTER VIA PUBLIC TRANSPORTATION

Tufts Medical Center is a major academic health center in downtown Boston, offering comprehensive inpatient and outpatient services to adults and children. It is located next to Chinatown and the Theater district. It is also conveniently located near public transportation.

The Tufts Medical Center MBTA stop on the Orange Line is directly across from the main entrance to the hospital at 800 Washington Street. This entrance has connections to all other inpatient and outpatient buildings. Other nearby MBTA stops are "Downtown Crossing" on the Red and Orange Lines and "Boylston" on the Green Line.

Tufts Medical Center is a twenty-minute cab ride from Logan Airport and within walking distance of South Station. Tufts Medical Center is also on the Silver Line.

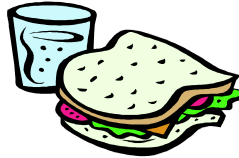
Subway maps, bus and commuter rail schedules are available at the Resource Office, Social Work Services, Farnsworth 1. For transportation information on-line, visit any of the following web sites:

www.tuftsmedicalcenter.org – for directions and Tufts Medical Center Campus map

www.mbta.com - for a complete listing of public transportation resources, including schedules and maps or call Customer Service at 617-222-3200

www.smartraveler.com - for real-time traffic and transit information or call them at 617-374-1234

PLACES TO EAT WITHIN TUFTS MEDICAL CENTER



Au Bon Pain - Atrium 1
617-338-4981
Open 24 hours including weekends

Chop'd & Top'd – Atrium 3
617-636-8835
Monday – Friday 7:00 am – 7:00 pm
Closed on weekends

Corporate Chefs - Floating Hospital – Plaza Level
617-636-4860
Monday – Friday 7:30 – 2:30 pm
Closed on Weekends

Dunkin Donuts – Proger 1
617-542-6165
Monday – Friday 5:30 – 10:00pm
Saturday 6:30 – 8:00 pm
Sunday 6:00 – 7:00 pm

Elements 4 Life – Lobby Biewend Bldg
617-636-4113
Monday – Friday 8:00 – 3:00 pm
Coffee, Salads, Sandwiches and Snacks

Harrison Cafe - 177 Harrison Avenue
617-426-2828
(Exit from rear Atrium door down Bennett Street on the right)
Monday – Friday 7:30 – 3:00 pm
Closed on weekends

Soups On – Dental Bldg – 7th Floor – Room 737
617-636-2128
Monday – Friday 10:00 – 1:30 pm
Closed on Weekends

HOTEL ACCOMMODATIONS NEAREST TO TUFTS MEDICAL CENTER

THE DOUBLETREE HOTEL

Boston Downtown	Jan 01 – Apr 05	\$109
821 Washington Street	Apr 06 – Sep 07	\$139
Boston, MA 02111	Sep 08 – Nov 15	\$209
617-956-7900	Nov 16 – Dec 31	\$109

www.hiltonfamilyboston.com

Located in the theater district, *directly across from the hospital's South Building entrance*. Hotel has an on-site sports complex including an Olympic-size pool. A stay of 14 nights or longer qualifies for a lower rate. The medical rate is not available during blackout dates. To book online go to www.hiltonboston.com/tuftsmedicalcenter

COURTYARD by MARRIOTT BOSTON TREMONT HOTEL

275 Tremont Street	Jan 01 – Apr 04	\$104
Boston, MA 02116-5694	Apr 05 – Sep 11	\$124
617-426-1400 or 888-223-7220	Sep 12 – Nov 20	\$164
www.marriott.com/hotels/travel/bosdm-courtyard-boston-downtown-tremont/?corporatecode=t46&todate=&fromdate=&app=resvlink	Nov 21 – Dec 31	\$104

Put "T46" in corporate code box.

Located in the theater district, *directly across from the hospital's Tremont Street garage*. A stay of 14 nights or longer qualifies for a lower rate. The medical rate is not available during blackout dates.

THE RADISSON HOTEL BOSTON

200 Stuart Street	Jan 01 – Apr 10	\$122
Boston, MA 02116	Apr 11 – Sep 04	\$189
617-482-1800 or 800-333-3333	Sep 05 – Nov 13	\$229
www.radisson.com	Nov 14 – Dec 31	\$129

Located in the theater district, *within three blocks from the hospital*. There is a year-round indoor swimming pool/sauna. A stay of 14 nights or longer qualifies for a lower rate. Rates are subject to availability.

BOSTON PARK PLAZA HOTEL

50 Park Plaza	Jan 01 – Apr 10	\$129
Boston, MA 02116-3912	Apr 11 - Sept 11	\$159
800-225-2008 or 617-457-2290	Sept 12 - Nov 20	\$199
www.bostonparkplaza.com	Nov 21 - Dec 31	\$139

Located in historic Back Bay, the hotel is located within four blocks from the hospital and adjacent to Newbury Street and Public Garden. There are nine dining outlets on property. Public transportation is easily accessible. The above rate is for the standard style room. Rates are based on availability. Ask for the Tufts Medical Center rate.

HOTEL ACCOMMODATIONS NEAREST TO TUFTS MEDICAL CENTER (cont'd)

HYATT REGENCY BOSTON

One Avenue de Lafayette
Boston, MA 02111
617-912-1234 or 800-233-1234
www.hyattregencyboston.com

Dec 09 – Mar 21	\$129
Mar 22 – Sep 06	\$129
Sep 07 - Nov 06	\$159
Nov 06 – Dec 10	\$129

Located *less than four blocks from the hospital in the Theatre District, adjacent to the Downtown Crossing T Stop on the Orange Line and Macy's department store.* Hotel has an indoor swimming pool and an on-site fitness center. Rates are subject to availability and are for a standard room. To book online go to www.regencyboston.hyatt.com and enter "28009" in the group corporate box to receive Tufts discount.

MILNER HOTEL

78 S. Charles Street
Boston, MA 02116
617-426-6220 or 800-453-1731
www.milner-hotels.com

\$69 - \$99

Located in the theater district, *within three blocks from the hospital.* Budget type hotel offers complimentary continental breakfast. Rate is based on a standard room. Written verification of hospital stay is required.

THE SHERATON BOSTON

39 Dalton Street, Boston, MA 02119
617-236-2000/800-325-3535
www.sheratonbostonhotel.com/healthcare

\$139

Located in Copley Square, the hotel features an indoor pool, fitness center, Starbucks and indoor connectivity to the shops at the Prudential Center. Transportation to hospital is easily accessible: Take orange line to Tufts Medical Center stop. Rate is for one king or two double beds and it is based on availability.

HOTEL ACCOMMODATIONS *FURTHER AWAY* FROM TUFTS MEDICAL CENTER

DOUBLETREE CLUB HOTEL

Boston Bayside - 240 Mt. Vernon Street, Boston, MA 02125

\$99

Rte 93, Exit 15

617-822-3600

www.hiltonfamilyboston.com

Approximately a *fifteen minute/ three and a half mile drive from the hospital and adjacent to the Bayside Expo*. Complimentary shuttle to Downtown Doubletree hotel based on advance request and availability. Au Bon Pain restaurant on premise. Parking is \$10.00/day. Rates are subject to availability. Rate not available during blackout dates. To book online go to

www.hiltonfamilyboston.com/tuftsmedicalcenter

RAMADA BOSTON

800 Morrissey Blvd, Boston, MA 02122

\$79

Rt. 93, Exit 13 from the south; Exit 12 from the north

617-287-9100 or 800-886-0056

www.bostonhotel.com

Approximately a *fifteen minute/five-mile drive from the hospital*. Free daily shuttle bus transportation to and from the hospital. Provides a complimentary deluxe continental breakfast. Outdoor pool on premise. Family Fun Center, with bowling, billiards, and video games. Complimentary parking. Pet friendly. Free shuttle to airport and "T". Restaurant on property.

COMFORT INN BOSTON

\$79.00

900 Morrissey BLVD

617-287-9200 or 800-424-6423

www.comfortinn.com

Approximately a *fifteen minute/five-mile drive from the hospital*. Free daily shuttle bus transportation to and from the hospital. Call hotel for schedule. Provides a complimentary deluxe continental breakfast. Outdoor pool on premise. Family Fun Center, with bowling, billiards, and video games. Complimentary parking. Pet friendly. Free shuttle to airport and "T". Restaurant on property.

HAMPTON INN & SUITES

811 Massachusetts Avenue, Boston, MA 02118

Jan 01 – Mar 31

\$109

617-445-6400

Apr 01 – Nov 20

\$129

www.bostonhamptoninn.com

Nov 21 – Dec 31

\$109

Approximately a *ten-minute/two mile drive from the hospital*. Free shuttle bus transportation to and from the hospital. Provides a complimentary breakfast buffet. Hotel has an indoor swimming pool and on-site recently renovated fitness center. Parking is \$10 a day. Rudi's Resto Café & Bar, Quiznos and Dunkin Donuts on site. Free shuttle to and from airport.

ALTERNATIVE ACCOMMODATIONS

HOSPITALITY HOMES

No-Cost
Accommodations

PO Box 15265
Boston, MA 02215
888-595-4678
www.hosp.org

A non profit organization which matches patients and their families in need of lodging with a host who has opened up his/her home to provide a clean and comfortable place to sleep and access to a bathroom. Many hosts offer limited kitchen use. Guests are responsible for their own food and transportation. Applications are accepted Monday through Friday from 9am to 5pm. Patients/family members are welcome to call directly but will need to give the name and phone number of a medical professional who will be able to provide a personal reference. Charges no fee but relies on donations from guests and others to sustain the program. Accepts applications over the phone or can be completed on line.

YWCA BERKELEY RESIDENCE

40 Berkeley Street
Boston, MA 02116
617-375-2524

\$64/single
\$94/double
\$114/triple

www.ywcaboston.org/berkeley

Located within five blocks from the hospital it provides short term stay accommodations for men, women and children. Price includes breakfast daily. . Laundry facilities available. Shared bathrooms. No checks - only credit cards or cash - are accepted from overnight guests. However, eight-week residents may pay by check. Rates vary seasonally, please call for updated information.

ACCOMMODATIONS FOR FAMILIES/PATIENTS UNDERGOING *CANCER* TREATMENT

THE NEELY HOUSE

\$20 per night per room

At Tufts Medical Center,
Farnsworth Building 5th floor, 800 Washington Street - Boston, MA 02111
617-636-5136 - Social Work Services

www.neelyhouse.com

A 16-apartment "Home Away from Home" *for cancer patients and their families* located within Tufts Medical Center. Patients must be accompanied in order to stay in the Neely House. Each apartment can house a family of two to four and has a kitchenette, private bathroom, telephone, microwave oven, TV and VCR. There are two common living rooms, two kitchens, playroom, meditation room, computer access, and laundry facilities. A resident manager is available to the patients during their stay. **Inquiries should be directed to the Department of Social Work Services where an oncology social worker must screen all initial admissions.**

ASTRA ZENECA HOPE LODGE

No cost accommodations

125 South Huntington Street – Jamaica Plain, MA 02130
617-396-5511 – Fax 617-278-1585

www.cancer.org/hopelodgeboston

For adult cancer patients who are receiving outpatient cancer treatment and their caregivers traveling more than 40 miles, with a minimum stay of three days for treatment. Provides 40 suites including a sitting room, bathroom and bedroom with two beds. Common areas include a library, courtyard, meal preparation and dining area, living room, game room, movie room and computer lab. Inquiries should be directed to the Department of Social Work Services where an oncology social worker can facilitate the required physician referral form.

HOPE LODGE

No cost accommodations

American Cancer Society (ACS), 7 Oak Street - Worcester, MA 01609 – 508-792-2985 ----800-ACS-2345

www.cancer.org

A 9-bedroom residential facility for *cancer patients of any age and their caregivers* who are receiving active treatment in the Worcester or Boston area. Donations are accepted. Approximately a *50-mile/one hour drive to the hospital*.