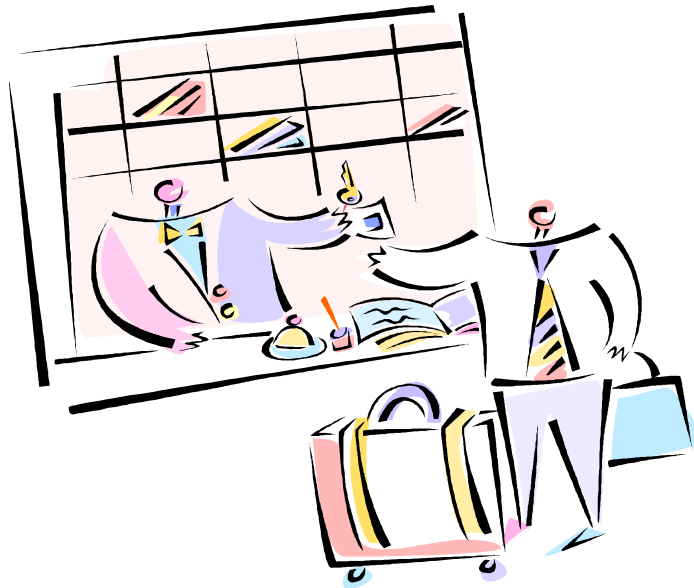


---

# PATIENT ACCOMMODATIONS GUIDE

---



## Department of Social Work Services

**Tufts Medical Center  
800 Washington Street  
Boston, MA 02111**

[www.tuftsmedicalcenter.org](http://www.tuftsmedicalcenter.org)

**Updated February 2014**

*Disclaimer: Information compiled by the Department of Social Work Services, Tufts Medical Center. Tufts Medical Center does not endorse any of these organizations or accommodations. We encourage you to direct specific questions to the agencies listed as information/rates are subject to change without notice.*

---

## HOTEL ACCOMMODATIONS 2014 IN BOSTON

---

### **VALUABLE TIPS**

Always ask for the "TUFTS MEDICAL CENTER RATE" when making hotel reservations for patients and/or their family members. This will ensure that the patient or family member receives the lowest rate possible. To guarantee this rate and to receive immediate confirmation, call the local telephone number of the hotel.

Web-site addresses have been included in this listing to give access to more detailed information on individual hotels including directions, amenities, etc. Be careful to note any cancellation policies, restrictions or fees, which may apply. If you have problems booking through the internet, please call the hotel.

All Boston hotels are subject to Massachusetts tax @ 14.45%. Please note the hotel rates listed in this guide are pre-tax rates.

Parking at Tufts Medical Center is less expensive than at downtown hotels and is available at the Tremont Street Garage, 274 Tremont Street, next to the Wang Center, or the Washington Street entrance, both with direct indoor access to the Floating Hospital, outpatient care areas and inpatient floors. The Tremont Street Garage (617-636-5580) is open 24 hours/day. Valet parking is available on Nassau Street, adjacent to the South Building at 860 Washington Street. "Valet Service" (617-636-8970) is free, open from 5:45 am to 4:00 pm, Monday - Friday, and the parking rates are the same as those for the Tremont Garage.

Patients should have their parking tickets validated for reduced parking rates.

### **MORE VALUABLE TIPS**

During certain times of year (conventions, holidays, etc.) when most hotels in Boston are full, you may find the following resources helpful:

#### **CENTRAL RESERVATION SERVICE of NEW ENGLAND**

1-800-332-3026 or 617-569-3800

[www.bostonhotels.net](http://www.bostonhotels.net)

Daily 9:00am – 11:00pm

No-fee discount hotel reservation service

#### **GREATER BOSTON CONVENTION AND VISITORS BUREAU**

1-888-SEE-BOSTON /617-536-4100

[www.bostonusa.com](http://www.bostonusa.com)

Information booths:

Boston Common: Mon–Fri 8:30am–5:00pm/Sat–Sun 9:00am–5:00pm

Prudential Center: Mon–Sat 9:30am–5:30pm/Sun 10:00am–6:00pm

#### **MASSACHUSETTS OFFICE OF TRAVEL AND TOURISM**

1-800-227-MASS or 617-973-8500

[www.massvacation.com](http://www.massvacation.com)

Monday-Friday from 9:00am – 5:00pm

---

## ACCESS TO TUFTS MEDICAL CENTER VIA PUBLIC TRANSPORTATION

---

Tufts Medical Center is a major academic health center in downtown Boston, offering comprehensive inpatient and outpatient services to adults and children. It is located next to Chinatown and the Theater district. It is also conveniently located near public transportation.

The Tufts Medical Center MBTA stop on the Orange Line is directly across from the main entrance to the hospital at 800 Washington Street. This entrance has connections to all other inpatient and outpatient buildings. Other nearby MBTA stops are "Downtown Crossing" on the Red and Orange Lines and "Boylston" on the Green Line.

Tufts Medical Center is a fifteen-minute cab ride from Logan Airport and within walking distance of South Station. Tufts Medical Center is also on the Silver Line.

Subway maps, bus and commuter rail schedules are available at the Resource Office, Social Work Services on Farnsworth 1.

For transportation information on-line, visit any of the following web sites:

Directions and Tufts Medical Center Campus map - [www.tuftsmedicalcenter.org](http://www.tuftsmedicalcenter.org)

Complete listing of public transportation resources, including schedules and maps or call Customer Service at 617-222-3200 - [www.mbta.com](http://www.mbta.com)

Real-time traffic and transit information - [www.smartraveler.com](http://www.smartraveler.com)

---

## PLACES TO EAT WITHIN TUFTS MEDICAL CENTER

---

### **Bakery Café**

Atrium 1  
617-636-9822  
Open Monday thru Friday 6am -6pm

### **Plaza Café**

Floating Hospital/Plaza Level  
617-636-0540  
Mon-Fri 7:30am - 2:30pm  
Closed on Weekends

### **Chop'd & Top'd**

Atrium 3  
617-636-8835  
Mon-Fri 7:00am -5:00pm  
Open 7 day/24 hours

### **Fresh Life Café**

Atrium 1  
Open Monday thru Friday 6am-6pm

### **Dunkin Donuts**

Proger 1  
617-542-6165  
Mon-Fri 5:30 - 10:00pm  
Sat 6:00 - 8:00 pm  
Sun 6:30 - 7:00 pm

### **Harrison Cafe**

177 Harrison Avenue  
617-426-2828  
(Exit from rear Atrium door down Bennett Street on the right)  
Mon-Fri 7:30am - 3:00pm  
Closed on weekends

---

## HOTEL ACCOMMODATIONS NEAREST TO TUFTS MEDICAL CENTER

---

### THE DOUBLETREE BY HILTON BOSTON DOWNTOWN

Boston Downtown  
821 Washington Street  
Boston, MA 02111  
617-956-7900  
[www.hiltonfamilyboston.com](http://www.hiltonfamilyboston.com)

Season Dates	Jan-01 to Mar-29	Mar-30 to Sep-01	Sep-02 to Nov-23	Nov-24 to Dec-31
Per night	\$139.00	20% Off Best Available	20% Off Best Available	\$139.00

The DoubleTree by Hilton Boston is located *across the street* from the hospital's South Building entrance. We **guarantee** discounted rates for Tufts patients and families. Enjoy complimentary access to the adjacent sports complex, as well as, our full service restaurant and bar, and Starbucks Café. Our dedicated reservations team is available to assist with any special requests and as a proud member of the Hilton Worldwide portfolio, guests can benefit from the Hilton HHonors loyalty program ([www.hhonors.com](http://www.hhonors.com)). Tufts rate will not apply during blackout dates, only best available rates will apply. To book online go to [www.hiltonfamilyboston.com/tuftsmedicalcenter](http://www.hiltonfamilyboston.com/tuftsmedicalcenter)

### COURTYARD by MARRIOTT BOSTON TREMONT HOTEL

275 Tremont Street  
Boston, MA 02116-5694  
617-426-1400  
888-223-7220  
[www.marriott.com](http://www.marriott.com)

Season Dates	Jan-01 to Mar-29	Mar-30 to Sep-06	Sep-07 to Nov-16	Nov-17 to Dec-31
Per night	\$125.00	\$181.00	\$243.00	\$155.00

The Courtyard Tremont is directly across from the hospital's Tremont Street Garage. European style hotel: Free internet and coffee/tea in lobby and guestroom, 24-hour access to fitness room. Laundry available on property. Courtyard Café open for breakfast in hotel lobby. A stay of 14 nights or longer qualifies for an additional discount. The Tufts rate is not available during blackout dates. Insert date, click on corporate/promotional box and type in "T46" - This will automatically extend the special discount Tufts members/patients are to receive.

### THE REVERE/BOSTON COMMON

200 Stuart Street  
Boston, MA 02116  
617-482-1800  
800-333-3333  
[www.radisson.com](http://www.radisson.com)

Season Dates	Jan-01 to Mar 30	Mar 31 to Sep-07	Sep-08 to Nov-17	Nov-18 to Dec-31
Superior	\$159.00	\$239.00	\$269.00	\$179.00
Premiere	\$189.00	\$279.00	\$309.00	\$219.00

Located just steps away from both the Boston Common and the city's vibrant Theater District, the Revere Hotel is within two blocks of the hospital. Spacious and contemporary guest rooms feature a private balcony with panoramic views of the city and complimentary internet. Hotel offers indoor pool, fitness center and 24-hr in room dining. Allergen free and pet friendly rooms offered. Rates are subject to availability. To book call 617-482-1800 and ask for the Tufts Medical Center Rate or go on-line and enter the promotional code NLTUF .

## BOSTON PARK PLAZA HOTEL

50 Park Plaza  
Boston, MA 02116-3912  
800-225-2008  
617-457-2290

[www.bostonparkplaza.com](http://www.bostonparkplaza.com)

Seasons	Jan-01 to Mar-31	Apr-01 to Sep -03	Sep-04 to Nov-16	Nov-17 to Dec-31
Standard Guestroom	\$129.00	\$229.00	\$239.00	\$129.00

Located in historic Back Bay, the hotel is situated within four blocks from the hospital. The hotel boasts nine different dining outlets directly on property. The Standard guestroom rates offered are for guestrooms with either one queen bed, one king bed or two double beds. A more budget friendly Plaza Petite Guestroom option is also available. Rates are based on availability. A stay of seven nights or longer qualifies for a lower rate. In addition, the Boston Park Plaza is pleased to offer the following amenities to all of their guests: 6:00pm day of arrival cancellation policy and complimentary use of newly renovated state of the art fitness center. Please ask for Tufts Medical Center at time of booking.

## W – BOSTON

100 Stuart Street  
Boston, MA 02116  
617-261-8700

[www.wbostonhotel/tuftsmedicalcenter.com](http://www.wbostonhotel/tuftsmedicalcenter.com)

### 20% OFF Best Available, Non-Restricted Rates

W Boston is less than a five minute walk to Tufts Medical Center. Tufts Medical Center patients and families will always receive a discount off of the hotel's best available rate, no blackout dates. Located in Boston's iconic Theatre District, there are numerous restaurants and activities within a one block radius of the hotel. Dine in or order room service from our onsite restaurant. To book, please call 617-261-8700 and request the Tufts Medical Center rate of reference SET#389444 or book online directly at [www.wbostonhotel/tuftsmedicalcenter.com](http://www.wbostonhotel/tuftsmedicalcenter.com). Please contact Shannon Beatty @ [Shannon.beatty@starwoodhotels.com](mailto:Shannon.beatty@starwoodhotels.com) for extended stays.

## HYATT REGENCY BOSTON

One Avenue de Lafayette  
Boston, MA 02111  
617-912-1234  
800-233-1234

[www.hyattregencyboston.com](http://www.hyattregencyboston.com)

Seasons	Jan-01 to Mar 31	Apr-01 to Sep-03	Sep-04 to Nov-20	Nov-21 to Dec-31
Mon-Tue-Wed-Thu	\$169.00	\$269.00	\$289.00	\$169.00
Fri-Sat-Sun	\$169.00	\$239.00	\$259.00	\$169.00

Located within walking distance, less than four blocks from the hospital in the Theatre District, connected to the Downtown Crossing T Stop on the Orange Line. Hotel offers indoor pool and fitness center, 24-hour in room dining. Hyatt Respire allergen free rooms and pet friendly rooms offered. Rates based on availability and are for a standard room. To book on-line go to [www.regencyboston.hyatt.com](http://www.regencyboston.hyatt.com) or call (800)-233-1234 and request the "Hospital Rate"

## MILNER HOTEL

78 S. Charles Street  
Boston, MA 02116  
617-426-6220  
800-453-1731  
[www.milner-hotels.com](http://www.milner-hotels.com)

Rates: \$79.00 - \$119.00/night

This historical, boutique hotel is centrally located in downtown Boston in the theater district. It is within walking distance of Tufts Medical Center. It features a free, daily continental breakfast buffet, free WiFi in all guest rooms and public areas. The Milner Boston is classically decorated. All rooms include cable and HBO on flat screen televisions. On-site guest laundry facilities are also available 24 hours a day. Located near public transportation.

Please ask for *Tufts Medical Center Rate* at time of booking.

## HOSTELLING INTERNATIONAL BOSTON

19 Stuart Street  
Boston, MA 02116  
617-536-9455  
[www.bostonhostel.org](http://www.bostonhostel.org)

10% OFF online rate – only valid online at [www.bostonhostel.org](http://www.bostonhostel.org) – Promotional Code **TUFTMC**

Hostelling International Boston (HI-Boston) opened the doors to its new hostel in 2012. The brand new facility is just blocks from Tufts Medical Center, at the intersection of Washington and Stuart Streets. HI-Boston offers affordable shared accommodations in dormitory style rooms. Bunks provide privacy with a personal locker; reading light and electrical outlet and individual hallway bathrooms are located just outside each room. A select number of private rooms with en suite bathroom are also available. Complimentary continental breakfast is served daily and free WiFi is available throughout the building. To book make your reservation at [www.bostonhostel.org](http://www.bostonhostel.org) and inpt booking code **TUFTMC**. Standard membership fees apply.

---

## HOTEL ACCOMMODATIONS FURTHER AWAY FROM TUFTS MEDICAL CENTER

---

## DOUBLETREE CLUB BY HILTON BOSTON BAYSIDE

Boston Bayside  
240 Mt. Vernon Street,  
Boston, MA 02125  
617-822-3600  
[www.hiltonfamilyboston.com](http://www.hiltonfamilyboston.com)

20% OFF Best Available Rate – No Blackout Date

The recently renovated DoubleTree Club by Hilton Boston Bayside offers both value and convenience with guaranteed discounted rates for Tufts patients and families as well as complimentary daily shuttle service directly to the hospital's South Building entrance. Our shuttle service also makes daily stops at Logan International Airport and downtown Boston. The MBTA Red Line (JFK/UMass "T" stop) is just two blocks away and our Marketplace Café and Take Away serves your favorite Starbucks beverages and Boars Head specialty sandwiches. As a sister hotel to the DoubleTree by Hilton Boston-Downtown, our hotel also features a dedicated reservations team to assist with your special requests and is a proud member of the Hilton Worldwide portfolio, featuring the Hilton H Honors loyalty program. ([www.hhonors.com](http://www.hhonors.com)).

To book online go to: [www.hiltonfamilyboston.com/tuftsmedicalcenter](http://www.hiltonfamilyboston.com/tuftsmedicalcenter)

## **RAMADA BOSTON**

800 Morrissey Blvd  
Boston, MA 02122  
617-287-9100  
800-886-0056  
Rt. 93, Exit 13 from the south; Exit 12 from the north  
[www.bostonhotel.com](http://www.bostonhotel.com)

Rate: \$99.00/night

Approximately a *fifteen minute/five-mile drive from the hospital*. Complimentary scheduled daily shuttle bus transportation to and from the hospital. Provides a complimentary deluxe continental breakfast. Outdoor pool on premise. Family Fun Center, with bowling, billiards, and video games. Free Wi-Fi, complimentary parking and pet friendly. Scheduled shuttle to airport and “T”. Restaurant on property.

## **COMFORT INN BOSTON**

900 Morrissey Blvd  
Boston, MA 02122  
617-287-9200  
800-424-6423  
[www.comfortinn.com](http://www.comfortinn.com)

Rate: \$109.00/night

Approximately a *fifteen minute/five-mile drive from the hospital*. Complimentary daily shuttle transportation to and from the hospital. Call hotel for schedule. Provides a complimentary deluxe continental breakfast. Outdoor pool on premise. Family Fun Center, with bowling, billiards, and video games. Free Wi-Fi, complimentary parking and pet friendly. Shuttle to airport and “T”. Restaurant on property.

---

## **ALTERNATIVE ACCOMMODATIONS**

---

### **HOSPITALITY HOMES**

PO Box 15265  
Boston, MA 02215  
888-595-4678  
[www.hosp.org](http://www.hosp.org)

No-Cost Accommodations

A non-profit organization provides temporary housing in volunteer homes for families and friends of patients seeking care at Boston-area medical centers. Hospitality Homes Hosts provide a clean and comfortable place to sleep and access to a bathroom. Guests are responsible for their own food and transportation. Applications are accepted online at [www.hosp.org](http://www.hosp.org). If an applicant has questions or needs to submit an application over the phone, our office is available Monday through Friday from 9:00am to 5:00pm EST. Guests are asked to contribute \$25.00 per night towards their stay, but no one is turned away due to their inability to make a contribution - 90-day stay limit.

---

## SHORT-TERM HOUSING

---

### RESIDENCE INN BY MARRIOTT

Boston Harbor on Tudor Wharf

33-34 Charles River Avenue  
Boston, MA 02129  
617-242-9000  
617-933-5314  
[www.marriott.com/bostw](http://www.marriott.com/bostw)

Seasons	1-6 Nights	7-13 Nights	14-29 Nights	30+Nights
Studio Suite City Side	\$199.00	\$189.00	\$169.00	\$159.00
One bedroom w/city view or Studio Suite with water view	\$209.00	\$199.00	\$179.00	\$169.00
One Bedroom Suite with water view	\$219.00	\$209.00	\$189.00	\$179.00

Visit Boston's premier all-suite, waterfront hotel, nestled in historic Charlestown on the Freedom Trail. Conveniently located ½ mile from downtown Boston and 1½ miles from Tufts Medical Center. The hotel is about a five minute walk to North Station and the Orange Line. All 168 spacious suites offer fully equipped kitchens and spectacular views of Boston Harbor and the city skyline. We offer complimentary hot breakfast buffet every morning, complimentary evening social with light dinner and drinks (Monday-Thursday), and complimentary wireless internet access. Take advantage of our heated indoor swimming pool and fitness center overlooking Boston Harbor and discover the many fine restaurants, renowned museums and historic sties within walking distance. Please contact hotel directly and ask for local hospital patient rates. Rates are tiered by length of stay and change seasonally.

### FURNISHED QUARTERS

The Hotel Alternative. Stay Different.

221 Massachusetts Avenue  
Suite 218  
Boston, MA 02115  
800-871-3446  
[www.furnishedquarters.com](http://www.furnishedquarters.com)

One bedroom – starts at \$120/day  
Two bedroom – starts at \$170/day

Furnished Quarters features fully furnished studio, 1 and 2 bedroom apartments in multiple locations throughout Boston, Cambridge and Brookline. Our locations are all convenient to public transportation and include amenities such as groceries, shopping and restaurants and are within close proximity to the hospital. We include fully equipped kitchens, housekeeping, local and long distance calls, WiFi, work desk and pull out sofas, along with basic cable in each of our beautifully furnished apartment homes. *Minimum one-month stay.*



---

## ACCOMMODATIONS FOR FAMILIES/PATIENTS UNDERGOING CANCER TREATMENT

---

### THE NEELY HOUSE

Tufts Medical Center  
Farnsworth Building, 5th floor  
800 Washington Street  
Boston, MA 02111  
Social Work Services 617-636-5136  
[www.neelyhouse.com](http://www.neelyhouse.com)

\$30.00/night

A 16-apartment "Home Away from Home" *for cancer patients and their families* located within Tufts Medical Center. Patients must be accompanied in order to stay in the Neely House. Each apartment can house a family of two to four and has a kitchenette, private bathroom, telephone, microwave oven, TV and VCR. There are two common living rooms, two kitchens, playroom, meditation room, computer access, and laundry facilities. A resident manager is available to the patients during their stay. **Inquiries should be directed to the Department of Social Work Services where an oncology social worker must screen all initial admissions.**

### ASTRA ZENECA HOPE LODGE

125 South Huntington Avenue  
Jamaica Plain, MA 02130  
617-396-5511  
617-278-1585 (fax)  
[www.cancer.org/hopelodgeboston](http://www.cancer.org/hopelodgeboston)

No cost accommodations

For adult cancer patients who are receiving outpatient cancer treatment (18 years old or older) and one caregiver traveling more than 40 miles, with a minimum stay of three days for treatment. Provides 40 suites including a sitting room, bathroom and bedroom with two beds. Common areas include a library, courtyard, meal preparation and dining area, living room, game room, movie room and computer lab. Inquiries should be directed to the Department of Social Work Services where an oncology social worker can facilitate the required physician referral form.

### HOPE LODGE

American Cancer Society (ACS)  
7 Oak Street  
Worcester, MA 01609  
508-792-2985  
800-ACS-2345  
[www.cancer.org](http://www.cancer.org)

No cost accommodations

A 9-bedroom residential facility for cancer patients, 18 years and older, who are receiving active treatment in the Worcester or Boston area. Donations are accepted. Approximately a 50-mile/one hour drive to the hospital and transportation is **not** provided.