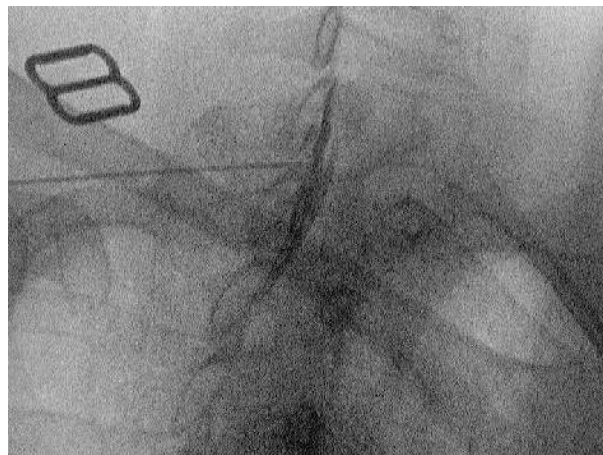
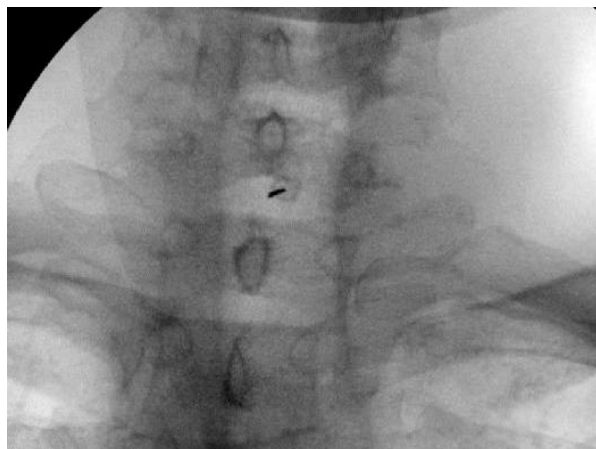


**Patient information: Cervical Epidural Injection**

Prepared by: Tufts PM&R Medical staff

**Overview and Indications for Procedure:**

Cervical Epidural Steroid Injections (With X-ray Guidance) are used to reduce pain, improve function and enabling patient to pursue Physical Therapy, and return to work, sports and daily / leisure activities. Its main indication is to decrease the inflammation associated with a variety of spinal conditions, such as herniated disc, cervical spinal stenosis, and degenerative disc disease with nerve root impingement. There seems to be a better response when the injections are coupled with an organized therapeutic exercise program, activity modification and ergonomic corrections

**Risk Associated with procedure:**

It is important to know risk associated with any medical or surgical treatment. , There are few risks associated with Lumbar epidural steroid injections and they tend to be rare. The potential risks include, but are not limited to:

- Immediate or delayed allergic reaction to medication use
- Infection
- Bleeding
- Nerve / Spinal Cord Injury
- Dural Puncture
- Temporary increase in pain
- High blood sugar levels
- Transient vaginal spotting
- Transient facial flushing
- Local bruising
- Vascular uptake of articulate steroid, cord ischemia

**Patient information: Cervical Epidural Injection**

Prepared by: Tufts PM&R Medical staff

*Infection* rate is less than 1% in patients receiving spinal injections performed under sterile conditions. The *bleeding complication* is more common in patients with history of bleeding disorder, patients being treated with anticoagulant/antiplatelet medications and patients taking over the counter medication like Motrin and Aspirin. The frequency of *injury to the nerve roots or spinal cord* has substantially reduced with use of fluoroscopy and contrast material. It is rare to encounter nerve root or spinal cord Injury with epidural injections. The rate of nerve injury and spinal cord injury is higher in obese patients due to poor visualization of the target on lateral X-rays. *Dural puncture* is an infrequent complication and may cause a positional headache (headache in seated and standing position but not on laying down position). This type of headache is often self-limiting, although in persistent cases, a blood patch may be necessary to alleviate the headache. *Elevated blood sugar* is a known effect of steroid medication and may last for 2-4 days after the injection of steroids. Patients on insulin will be following sliding scale to adjust for elevated sugar levels. Patients on oral medication should follow primary care advice regarding temporary increase in oral medication to accommodate for blood sugar levels

Following side effects tend to be rare, though they become more common when steroids are taken daily for several months. These risks and side effects may include:

- A transient decrease in immunity
- Stomach ulcers
- Severe arthritis of the hips (avascular necrosis)
- Cataracts
- Increased appetite
- Agitation and irritability
- Negative effect on bone density and fractures

**Who Should Avoid Epidural Steroid Injections?**

Cervical Epidural Steroid Injections should not be performed following conditions:

- In individuals with known allergies to local anesthetics, steroids or contrast material
- Patients with local or systemic bacterial infection
- Pregnant Patients
- Patients with bleeding disorders
- Patients suffering from a tumor or infection of the spine
- Uncontrolled congestive heart failure or diabetes
- When risk of holding certain medications (Aspirin, antiplatelet drugs/blood thinners) outweighs benefit of the epidural procedure

**Patient information: Cervical Epidural Injection**

Prepared by: Tufts PM&R Medical staff

**Prepare for your Procedure:**

- Certain medications have to be held before elective spinal procedures. We will provide you with the list of medications that has to be held with the exact number of days it needs to be held. Do not hold such medication on your own. Consult your Primary Care Physician (or Cardiologist) before stopping those medications. Ask your PCP if it is safe to stop the medication. Continue to take all other medications, especially your Blood Pressure medications.

A sample of medications that has to be held includes:

- |                              |                            |
|------------------------------|----------------------------|
| 1. Aggrenox® (dipyridamole)  | 7. Herbal blood-thinners   |
| 2. Aspirin                   | 8. Heparin                 |
| 3. Coumadin® (warfarin)      | 9. Eliquis® (apixaban).    |
| 4. Effient® (prasugrel)      | 10. Lovenox® (enoxaparin)  |
| 5. Fragmin® (dalteparin)     | 11. Plavix® (clopidogrel), |
| 6. NSAIDS (see sample below) | 12. Pradaxa® (dabigatran)  |
|                              | 13. Ticlid® (ticlopidine)  |

NSAIDS to be held (such as Ibuprofen, Motrin, Naproxen, Advil, Nabumetone, Diclofenac, Etodolac, Indomethacin, Ketorolac, Meloxicam, Piroxicam, Ketoprofen, Oxaprozin)

- Please let us know if you have had fevers, antibiotic treatment, any illness, or hospitalization within the last 4 weeks. You must be healthy and off all antibiotics on the day of the procedure
- Make sure you are not Pregnant at the time of procedure. Do a Urine Pregnancy Test the night before your spinal injection and report the results to the nurse before the procedure. Exposure to X-ray (used during spinal procedure) is known to result in birth defects and possible miscarriage. If in doubt, cancel and reschedule your procedure until you can confirm that you are not pregnant

**Day of your procedure:**

- Please take a shower, wash the skin with normal soap and DO NOT put skin lotions or mediated creams in the area of the injection .Wear dark and loose clothing and undergarment.
- Arrive 30 minutes early and come with someone that can give you a ride home. Your procedure should take less than 30 minutes and your total time from greeting to end should be less than 90 minutes.
- Bring an updated list of your medications and allergies. Please point out if you are allergic to Contrast, Iodine or Latex.
- Bring your latest MRI /CT /imaging studies and the report with you.
- Do not eat or drink for 2 hours before your appointment. Diabetics may have a light meal.
- After check-in, an ID wristband containing your name and allergies will be placed on your wrist. A nurse or medical assistant will go over your meds and allergies and ask few screening questions. Then a nurse will go over final preparation before the procedure. If necessary an IV line will be placed particularly if this is your first spinal procedure.
- In rare cases, oral sedation is needed to reduce anxiety associated with the procedure. This will slow down the entire process. Take medication 1 hour before the procedure and you must have someone drive you to and from the procedure. Without the ride, procedure would likely be canceled.

---

**To learn more about this condition or to be evaluated by one of our Physiatrist at Tufts Medical Center please call 617.636.5631 or visit us at [www.TuftsRehab.Com](http://www.TuftsRehab.Com)**

**Patient information: Cervical Epidural Injection**

Prepared by: Tufts PM&R Medical staff

**During the procedure:**

- You will change into a gown. You will be escorted to the procedure by a nurse and a consent form will be reviewed/ signed before the procedure. You will be asked to lay on your stomach
- Blood pressure and heart rate monitor will be placed on your arm/finger. Every medical equipment produces loud noises (beeping, alarms) and you should not be concerned.
- Intermittently your doctor will talk to staff in the procedure room and instruct them to perform a task. Your physician will guide you step by step through the procedure.
- After standard time out, your skin will be disinfected with a cool solution, and sterile sheet of paper or plastic will be placed on your skin.
- When your physician is ready, X-ray unit is placed over your spine to identify the target.
- Skin will be marked and anesthetized (you will feel small pinch and burning sensation at each spot). It is normal to feel pressure or muscles twitching as needles are advanced to the final target.
- Once needle is at radiographic target, a small amount of contrast is injected to confirm final needle position before injecting steroid medication. You may feel transient pressure in your spine or arm.
- Once procedure is completed, needle is removed, skin is cleaned and bandage is applied. You are then transferred back to the recovery area for observation.

**Right after the procedure:**

- You will be observed for 15-45 minutes.
- If you have an IV line, it will be removed.
- A nurse will check your vitals and review the discharge instructions with you and will answer any questions you may have. A responsible adult must be present to drive you home after discharge.
- You will leave along with a pain log and a copy of the discharge instruction which contains Emergency contact numbers. Please do not discard your discharge instructions.
- A responsible adult must drive you home.

**Discharge instructions:**

- Make a follow-up 2-3 weeks after the procedure and bring your pain log with you.
- For 24 hours after the procedure, do not drive or operate machinery
- If sedated, for 24 hours after the procedure, do not make financial or important life decisions until the effect of such medication is cleared
- For 24 hours after the procedure, do not participate in strenuous activity
- It is okay to shower after procedure. No bathing /submerging under water for 24 hours.
- You may remove the bandages 24 hours after the injection. Call if there is excessive redness or infection sign like warmth, discharge or collection of puss at the site of injection.
- You may resume your normal diet and medications after procedure.
- Resume your Blood Thinners/ Anticoagulants / Antiplatelet as instructed by PCP or Cardiologist. You may need to check INR/PT/PTT 2-3 days after your procedure. Contact your primary care and ask when you should have the blood work.
- Diabetics should monitor blood sugar levels 3 times a day for 3 days after the procedure.

**Patient information: Cervical Epidural Injection**

Prepared by: Tufts PM&R Medical staff

**Call your doctor if you develop these symptoms. You may be directed to ER:**

- Shortness of breath or palpitation after procedure
- Sudden weakness
- Fever over 101°F within 5 days after procedure
- Persistent redness increased localized pain or discharge from the site of injection.
- Possible allergic reaction within 5 days of the procedure
- Intractable headache
- Significant increased pain not responding to ice, NSAIDS and pain meds or associated with fever
- Newly developed weakness in the legs, face or arm following procedure
- Newly developed incontinence of urine or stool following procedure

**Insurance:**

Most insurance require prior authorization to cover this procedure . Your doctor will provide information to insurance company for approval. It takes anywhere between 3-15 days for approval (Medicare beneficiaries require no authorization). You would likely have copay and deductible for this type of treatment.

You would also receive two medical bills related to these type of treatments (Hospital bill and Doctors bill).

Please call your insurance company to understand your benefits. The codes used for this procedures are : CPT: 62310 and 77003

**Keywords:** Cervical Epidural Injection, Interlaminar Epidural Injection, Cervical ESI

## Patient information: Cervical Epidural Injection

Prepared by: Tufts PM&R Medical staff

Patient Instructions for Temporary Holding Medications before Spinal Procedures/Injections

IF YOU HAVE ANY QUESTIONS REGARDING THESE INSTRUCTIONS CALL 617-636.5631

The decision to discontinue or hold medications should be shared between the spine specialist, patient, and prescribing physician (usually PCP, cardiologist or neurologist). These medications are held for specific period of time to limit bleeding complications during and within the 1st 24-72 hours after procedure. We follow nationally recognized guidelines including ASRA, American Society Pain Medicine, the European Society of Regional Anesthesia and Pain Therapy, the American Academy of Pain Medicine, and the World Institute of Pain.

If you are on any of the following medication, please discuss with the prescribing physician whether or not you're allowed to hold the medication for indicated amount of time prior to her procedure. You may resume that medication after your spinal procedure as indicated below.

Medication Anticoagulant- Antiplatelet	STOP BEFORE Injection/Procedure	RESTART AFTER Injection/Procedure
ABCIXIMAB	5 days	12 hours
Acenocoumarol	5 days-INR 1.3	24 hours
AGGRASTAT	24 hours	24 hours
APIXABAN	72 hours	24 hours
ARIXTRA	4 days	24 hours
Aspirin 325	4 Days	24 hours
Aspirin 81	2 Days	24 hours
BRILINTA	5 days	12 hours
CILOSTAZOL	48 hours	24 hours
CLOPIDOGRL (Plavix)	7 days	12 hours
COUMADIN (warfarin)	5 days- INR 1.3	24 hours
DABIGATRAN	4 days	24 hours
DALTEPARIN	24 hours	12 hours
Dipyridamole	48 hours	24 hours
EFFIENT	7 days	12 hours
ELIQUIS (Apixaban)	72 hours	24 hours
ENOXAPARIN	24 hours	12 hours
EPTIFIBATIDE	24 hours	24 hours
FONDAPARINUX	4 days	24 hours
FRAGMIN	24 hours	12 hours
HEPARIN IV	8 hours	24 hours
HEPARIN SQ	8 hours	12 hours
LOVENOX	24 hours	12 hours



**Patient information: Cervical Epidural Injection**

Prepared by: Tufts PM&R Medical staff

<b>PERSANTIN</b>	48 hours	24 hours
<b>PLAVIX</b>	7 days	12 hours
<b>PLETAL</b>	48 hours	24 hours
<b>PRADAXA</b>	4 days	24 hours
<b>PRASUGREL</b>	7 days	12 hours
<b>REOPRO</b>	5 days	12 hours
<b>RIVAROXABAN</b>	72 hours	24 hours
<b>TICAGRELOR</b>	5 days	12 hours
<b>TICLID</b>	14 days	24 hours
<b>TICLOPIDINE</b>	14 days	24 hours
<b>TIROFIBAN</b>	24 hours	24 hours
<b>Vorapaxar</b>	7 days	12 hours
<b>WARFARIN</b>	5 days-INR 1.3	24 hours

<b>NSAIDS and Others</b>	<b>STOP BEFORE Injection/Procedure</b>	<b>RESTART AFTER Injection/Procedure</b>
<b>Aspirin 500</b>	4 Days	24 hours
<b>Aspirin 325</b>	4 Days	24 hours
<b>Aspirin 81</b>	2 Days	24 hours
<b>Bufferin</b>	4 Days	24 hours
<b>Celebrex</b>	Do not stop	Do not stop
<b>Daypro</b>	5 Days	24 hours
<b>Diclofenac</b>	2 Days	24 hours
<b>Dolobid</b>	4 Days	24 hours
<b>Ecotrin</b>	4 Days	24 hours
<b>Etodolac</b>	2 Days	24 hours
<b>Exedrin</b>	4 Days	24 hours
<b>Fiorinal</b>	4 Days	24 hours
<b>Ibuprofen</b>	2 Days	24 hours
<b>Indocin</b>	3 Days	24 hours
<b>Indometacin</b>	3 days	24 hours
<b>Ketorolac</b>	2 Days	24 hours
<b>Lodine</b>	2 Days	24 hours
<b>Meloxicam</b>	5 Days	24 hours
<b>Midol</b>	4 Days	24 hours
<b>Motrin</b>	2 Days	24 hours
<b>Nabumetone</b>	7 days	24 hours
<b>Naprosyn</b>	4 Days	24 hours
<b>Naproxyn</b>	4 Days	24 hours
<b>Oxaprosin</b>	5 Days	24 hours

**Patient information: Cervical Epidural Injection**

Prepared by: Tufts PM&R Medical staff

<b>Percodan</b>	2 Days	24 hours
<b>Relafen</b>	7 days	24 hours
<b>Salasate</b>	4 Days	24 hours
<b>Sulindac</b>	4 Days	24 hours
<b>Talwin</b>	4 Days	24 hours
<b>Tordol</b>	2 Days	24 hours
<b>Trilisate</b>	4 Days	24 hours
<b>Vicoprofen</b>	2 Days	24 hours
<b>Voltaren</b>	2 Days	24 hours

***Weight loss and Nutrition Supplements to be held for 5 days***

<i>Alpha Lipoic acid</i>	<i>Acetyl 1 1. Carnitin</i>	<i>Cinnamon</i>	<i>Chamomile</i>	<i>Creatinine</i>
<i>Echinacea</i>	<i>EPHEDRA</i>	<i>Fish oil</i>	<i>Garlic</i>	<i>GINGER</i>
<i>GINKGO BILOBA</i>	<i>Ginseng</i>	<i>GLUCOSAMINE</i>	<i>Glutenin</i>	<i>Goldenseal</i>
<i>L -Carnosine</i>	<i>Licorice</i>	<i>Kava Kava</i>	<i>Milk Thistle</i>	
<i>Omega-3</i>	<i>Resveratol</i>	<i>Skullcap</i>	<i>St Joh's Wort</i>	<i>Vitamin E</i>